

[View this email in your browser](#)



Message from the Chair

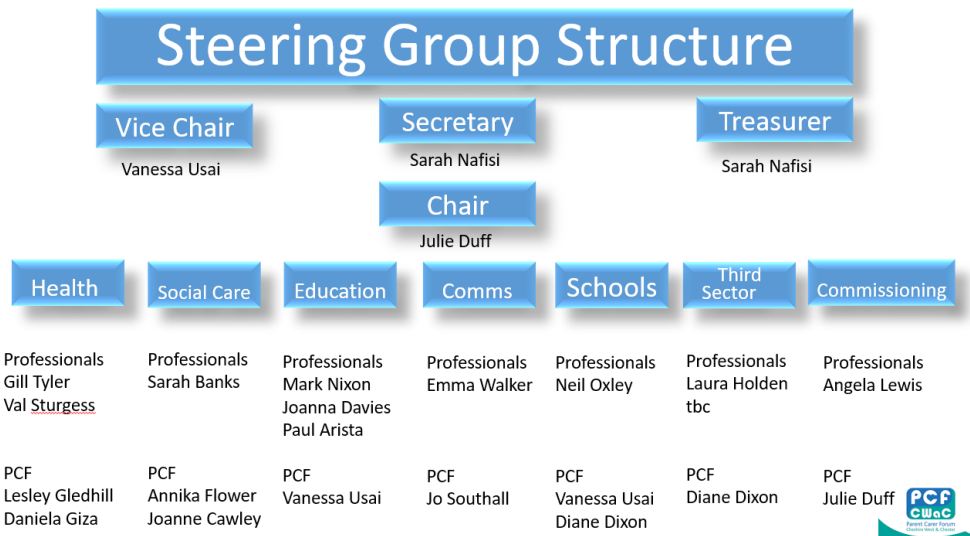
Welcome Back and introductions

We would like to welcome all of our families back from the recent summer break and take this opportunity to welcome 2 new members to our Steering Group and share with you our Steering Group Structure.

Joanne Cawley is Mum to James who has recently started a Hospitality and Catering course at Petty Pool College. Jo is taking on our Social Care Lead role and will be working alongside Annika Flower to represent your experiences.

I would also like to welcome Daniela Giaz, who is joining as our Health Lead working alongside Lesley Gledhill. Daniela is Mum to 2 children and has valuable lived experiences that she can share with our Professional Colleagues.

Here is an outline of our 2022 PCF Steering Group.



[Subscribe](#)[Past Issues](#)[Translate ▼](#)[RSS](#)


Parent
Management Board
Members

Julie Duff	Chair
Sarah Nafisi	Secretary/Treasurer
Vanessa Usai	Vice Chair and Education Lead
Jo Southall	Communications Lead
Diane Dixon	Third Sector and Schools Lead
Lucy Kennerley	Parent Voice Lead
Lesley Gledhill	Health Lead
Daniella Giza	Health Lead
Jo Cawley	Social Care Lead
Annika Flower	Social Care Lead
Esther Fletcher	Advisor

Back to School



Back to school can be a tricky time for our children with SEND. We have had a lot of feedback that there have been significant issues with Transport this year. We have been working with the Transport Team to escalate these issues. In the new few days we will be asking you for your specific feedback so that we can improve services and the experiences for our children with SEND in the Future.

Coffee and Catch ups



In addition to our Forums, we are also planning some drop in coffee events across the borough. We are in the process of finding venues for these, so please keep an eye on our website for details. In the meantime, I encourage you to attend your School Coffee Events where we will have representatives there to support you. We now have PCF School Reps at most of our Special Schools and are looking for volunteers in our Mainstream schools. If you would like to help then please get in touch.

Julie Duff - Chair

[Click Here to Email PCF CWaC](#)

Parent Carer Forum Event:
Wed 21st September 2022
7.00 - 8.30pm

Topic:
Benefits / Wills & Trusts

Online Zoom Event

Agenda to include:
Welcome back!
Update from PCF CWaC

Book online today to reserve your place.
www.pcfcheshirewest.org/whats-on

PCF CWaC are looking forward to welcoming you back to our 2022/23 events. Our first Forum will be held on Wednesday 21st September 2022.

We have listened to our members feedback, with making events more accessible for working parents being a common theme. As requested by you our first Forum will be held as a virtual evening forum covering the topics of Benefits and Will & Trusts.

We will be recording the session and the recording will be posted on our website for you to visit at your convenience.

To book your place please use the link below...

[PCF September Virtual Forum Booking...](#)

Plans for next year academic year

We have a busy year of Forums planned. Please take a look at our schedule of both in person and virtual forums for the next academic year. In addition to this we will continue to work alongside our Professional Colleagues on consultations ranging from the navigation of the LiveWell website, After school provision to the review of community Paediatrics.



Parent Carer Forum
Cheshire West & Chester

We are Parents & Carers who have children and young people with Special Educational Needs and/or Disability (SEND).

Run by parents, for parents.

Free events. Opportunities to have a voice. Ask questions. Meet other parents and professionals from SEN Services, in Health, Education & Social Care.

The aim of the PCF is...

- To be the voice of as many parents/carers as possible.
- Influence decisions about gaps in services.
- Provide information and signposting to Professionals and Voluntary Organisations.
- Co-produce improvements to Services so that all children and young people in the Borough with SEND are given the chance to achieve the best possible outcomes.



Parents appreciate the support of the parent carer forum (PCF). This helps parents' voices to be better heard by leaders. The PCF is included in many strategic workstreams and boards. This makes sure that the views of parents and carers are considered in strategic planning.

Adam Sproston,
HMI Lead Inspector - Ofsted



www.pcfcheshirewest.org www.facebook.com/pcfchwac



Our Forum is freely available to all parents or carers who access Special Educational Needs or Disability services within the Borough of Cheshire West and Chester.

Come along to our free events to find out what's going on in Cheshire West & Chester and tell us about what's important to you, your child or young person. Check our website for more information nearer the time of the event as some details could change and extra speakers/items added to the agendas.

In Person Forums

November 23rd 2022

Chester Venue tbc

10am - 2pm

**Mental Health Services
Social Care**

March 22nd 2023

Northwich Winsford Venue tbc

10am - 2pm

**Review of Services
Meet the Professionals**

May 24th 2023

Ellesmere Port Venue tbc

10am - 2pm

**Mediation Services
Transition to Adulthood**

Virtual Forums

Virtual Forums held live on Zoom, recorded and available later on our website.

September 21st 2022

7pm - 8.30pm

Benefits and Carers

18th January 2023

10am - 11.30am

**Social Care including
an explanation
of Direct Payments**

April 19th 2023

10am - 11.30am

**A Roadmap and introduction
to Special Educational Needs
- where to find support.**

For more details or to book, visit our website:
www.pcfcheshirewest.org

[Subscribe](#)[Past Issues](#)[Translate ▾](#)[RSS](#)

USEFUL CONTACTS

Live Well Cheshire West - <https://www.livewell.cheshirewestandchester.gov.uk>

Information Advice and Support Service (IASS) - Tel 0300 123
7001 <https://www.livewell.cheshirewestandchester.gov.uk/Services/1279>

SEN Team - Tel 0151 337 6505
senteam@cheshirewestandchester.gov.uk

Starting Well - <http://www.startingwell.org.uk/>

West Cheshire 0-16 CAMHS Tel - 01244 393200
<https://www.cwp.nhs.uk/services-and-locations/services/west-cheshire-0-16-camhs/>

Get Involved with the PCF...

We are always looking for new parents and carers to join us. You can attend meetings, give feedback to influence the services your child or young person uses or help us to identify the gaps in services. Also, a chance to meet other parents and learn about what's on offer in Cheshire West & Chester.

To contact us.....visit our website www.pcfcheshirewest.org
email secretary.pcf.cwac@gmail.com
or join us for one of our meetings.
We hope to see you soon!



Copyright © 2021 CWAC PCF, All rights reserved.

Our mailing address is:
secretary.pcf.cwac@gmail.com
Want to change how you receive these emails?
You can [update your preferences](#) or [unsubscribe from this list](#).

This email was sent to <<Email Address>>
[why did I get this?](#) [unsubscribe from this list](#) [update subscription preferences](#)
PCF CWAC · The Corn Store Brownheath Farm · Hodge Lane, Hartford · Northwich, Cheshire CW8 3AJ · United Kingdom

[Subscribe](#)

[Past Issues](#)

[Translate ▼](#)

[RSS](#)

