



QUEEN'S PARK HIGH SCHOOL



Year 9 Guided Choices *Information Booklet*

2026-28

Inspiring Individuals • Empowering Minds • Defining Futures



Introduction

The decisions about which courses to study in Years 10 and 11 are crucial to your future aspirations, whether you intend to enter employment, training, go into the Sixth Form or move to a college of further education. These decisions are very important and we want to ensure that you are guided to make the right choices for you and your future.

You will follow a specific pathway to support your learning journey through Year 10 and 11. These pathways are:

JEWEL Pathway	GEM Pathway
<ul style="list-style-type: none">• Choose 4 options• One option must be chosen from geography or history• EBacc route is recommended but is not compulsory (1 option as French/Spanish)	<ul style="list-style-type: none">• Choose 3 options• One option must be chosen from geography or history• Additional English and maths support to boost progress in these subjects

This booklet sets out the courses which you can study. We are ambitious for our students and strongly urge them to consider the merits of continuing to pursue a broad and balanced curriculum so as not to close down opportunities for the future too soon.

There are many different courses available at Queen's Park High School and it is of paramount importance that you read the information in this booklet very carefully. Study the course information pages and ensure you are fully aware of the type of learning and assessment you will experience in each subject before making a decision. We aim to offer you a set of subjects which fit for you and therefore we may help guide you to make the final decision about the most appropriate subjects to study at GCSE.

Your initial choices form must be completed by Friday 30th January 2026 using the options form provided this evening. This however, will not be the end of the process. You may have an interview with a member of staff to discuss any issues arising and make any necessary alterations to your options form. We will do everything possible to accommodate your wishes, but courses may be withdrawn if very few students opt for a particular subject, hence the need to make considered reserve choices. You and the people around you are a crucial part of the process and we want it to work successfully for you. Use the time wisely and talk to your teachers, your tutor and your parents.

The next few weeks are important for you and your future!



Mr A Jones
Deputy Headteacher

Inspiring Individuals • Empowering Minds • Defining Futures



Key Dates

DATE	EVENT	INFORMATION
Thursday 15th January 2026	Year 9 Guided Choices Evening	Talk on options and opportunity for parents to talk to subject teachers in curriculum areas.
Friday 30th January 2026	Deadline for option forms	Signed option choice forms to be completed via hard copies which should be handed in to your tutor or Mr Jones.
From Monday 2nd February 2026	Review of students' choices	Senior teachers to review individual student choices, check subject viability, and arrange follow up interviews if necessary. Interviews to be carried out with students to ascertain rationale behind choices, helping to guide their curriculum.
June 2026	Option choices confirmed	Students will be informed of their finalised option choices



Subject Locations on Guided Choices Evening

SUBJECT	ROOMING
Art	A2
Computer Science	H6
Drama	DR1
Food Technology	Food Room
Geography	H3
Health and Social Care	SP2
History	H1
French	E8
Media Studies	E3
Music	MU1
PE Core and Option	SP1
Photography	A2
RE	SP3
Science Triple and Combined	S5
Spanish	E9
Technology: 3D Design and D&T	Technology
Careers Event	Main Canteen



Option Subjects - Course Information

Subjects

- | | | | |
|--------------------------|------|------------------------------------------------|------|
| • Art & Design | P 6 | • Modern Foreign Languages (French or Spanish) | P 14 |
| • Computer Science | P 7 | • Music | P 15 |
| • Drama | P 8 | • Physical Education | P 16 |
| • Food Technology | P 9 | • Photography | P 17 |
| • Geography | P 10 | • Religious Studies | P 18 |
| • Health and Social Care | P 11 | • Technology - 3D Design | P 19 |
| • History | P 12 | • Technology - D&T | P 20 |
| • Media Studies | P 13 | • Triple Science | P 21 |



Art and Design (GCSE)

What will I learn about?

Students must select and present a portfolio representative of their course of study. The portfolio must include both:

1. A sustained project developed in response to 'Identity' and the 'Environment' evidencing the journey from initial engagement with ideas to the realisation of intentions. Students will explore different artists, designers, craft people and photographers to develop their knowledge and understanding across their course of study. Skills developed in the use of painting, drawing, 3D, glass, ceramics and Photoshop can be explored and used to create their work.
2. A selection of further work resulting from activities such as trials and experiments and skills-based workshops will be used to support the portfolio submission.

How will I be assessed?

The Art and Design course combines an element of coursework and practical examination components. In this way, students are assessed on both their practical skills and their written knowledge and understanding.

Component 1: Portfolio

60% of GCSE

Component 2: Externally set assignment

40% of GCSE

What skills are needed/involved?

A broad depth of knowledge and understanding from all of your current subjects is an excellent starting point. Having a creative imagination and the enjoyment of wanting to make and create is fundamental.

Where can this subject lead me to in the future?

The next natural progression would be A Level art and photography. Degree course at university which build upon GCSE Art and Design are in art, architecture, textiles, fashion, interior design, animation and film to name but a few.



Computer Science (GCSE)

What will I learn about?

On this course, students will study how computers work, how to write programs and how data is represented and handled by applications. Below is information about the components of the course.

Principles of Computer Science — The first component is focused on five topics: Computational thinking and Algorithms, Data and Data Representation, Computer Software and Hardware, Computer Networks, and the Issues and Impact of Computer Science.

Application of Computational Thinking — The second component is focused on understanding what algorithms are, what they are used for and how they work in relation to creating programs, understanding how to decompose and analyse problems and the ability to read, write, refine and evaluate programs.

Practical Programming — All students undertaking this course will have ample experience throughout of programming using the Python programming language.

How will I be assessed?

Paper 1: Principles of Computer Science — Written examination: 1 hour and 30 minutes
50% of GCSE

Paper 2: Application of Computational Thinking — Onscreen examination: 2 hours
50% of GCSE

What skills are needed/involved?

Computer science is a theoretical and practical subject. It has many links to the sciences where many of the same thinking skills are used. Problem-solving, logical reasoning and algorithms are taught and students will develop analytical and computational thinking skills. The content is highly mathematical and requires a high level of logical reasoning. An interest on how to solve logic and maths puzzles is desirable.

Where can this subject lead me to in the future?

You can progress from this qualification to further studies at school or college and further/higher education, for example A Level Computer Science and degrees in Cyber Security and Computer Engineering.



Drama (GCSE)

What will I learn about?

The course is designed to develop not only an understanding of theatrical conventions and dramatic technique, but also the development of core skills such as confidence, the ability to work within a group, leadership, management and presentation skills. You will have the opportunity to visit theatres all over the country and appreciate the power of live work. You will study a range of plays through practical exploration and perform them for audiences. There will be numerous opportunities for you to develop your own pieces of work based on a range of stimuli, which you will be given throughout the two year course. Most importantly, you will learn more about your own identity in relation to the world around you and how it can be used to express ideas in creative yet meaningful ways.

How will I be assessed?

Assessment is spread across three components. The first component focuses on the ability to create original pieces of work from a stimulus, which is chosen by the teacher. You will then perform your piece and hand in a portfolio of evidence exploring the process you went through. Component 2 is a live performance from two sections of a script for a visiting examiner. You can design for this section of the GCSE. Finally, for Component 3 you will sit a 1hr 45min written examination based on a play you have studied, and also a theatre production you have been taken to see as part of the course.

What skills are needed/involved?

You must have enthusiasm, commitment and a strong desire to better yourself and respect the work of others. You must be an excellent listener and a reflective thinker who can accept criticism and deliver it sensitively to others.

Where can this subject lead me to in the future?

Many students have used this course as a cornerstone of self-development before moving on to a vast array of further courses. Natural progression routes include moving to a level 3 course such as A BTECs in acting and performance. Beyond that, most employers see GCSE Drama as a sign of a confident and effective team worker.



Food Technology (Vocational Award)

What will I learn about?

The WJEC Level 1/2 Vocational Award in Hospitality and Catering has been designed to support students who want to learn about this vocational sector. The course focuses on nurturing students' practical cookery skills to give them a strong understanding of nutrition.

Topics include:

- Factors which affects the hospitality and catering industry
- Food nutrition and health, food choices and food trends
- Food safety and hygiene
- Food provenance (sustainability, regional, organic, cost)
- Client base and working to a brief

How will I be assessed?

The WJEC Level 1/2 Vocational Award in Hospitality and Catering is made up of two mandatory units:

Unit 1: The hospitality and catering industry

40% of course

External exam of length 1hr 30mins

Unit 2: Hospitality and catering in action

60% of course

Non-examined assessments

What skills are needed/involved?

Students will need to be keen to develop practical skills but also have an interest in analysing and applying nutritional understanding and 'cooking for others' in preparation for working in the hospitality and catering industry.

Where can this subject lead me to in the future?

Employment in hospitality and catering can range from waiting staff, receptionists and catering assistants to chefs, hotel and bar managers and food technologists in food manufacturing. There are also opportunities for higher level qualifications and apprenticeships.



Geography (GCSE)

What will I learn about?

The GCSE curriculum covers elements of traditional and contemporary geography with a focus on modern day related issues. Below is a brief overview of the course content:

- Challenges in the natural environment
- The living world
- Physical landscapes in the UK
- Urban issues and challenges
- The changing economic world
- The challenge of resource management
- Issue evaluation
- Fieldwork skills

How will I be assessed?

There are three single-tiered assessments:

Paper 1: Living with the physical environment

35% of GCSE

1hr 30mins

Paper 2: Challenges in the human environment

35% of GCSE

1hr 30mins

Paper 3: Geographical application

30% of GCSE

1hr 15mins

What skills are needed/involved?

Students need to have worked hard in Year 9 geography, and be committed to working well in groups and individually. Students who study GCSE geography must want to learn about places and how people interact with them. You will need good maths skills and also be able to write longer written essays.

Where can this subject lead me to in the future?

GCSE geography can lead onto further study at A Level, or onto related courses such as Environmental Studies. A degree in geography or geography-related courses in the future leads to careers in sustainability, green issues, urban regeneration, energy supply, retail location, managing natural hazards and climate change, and town planning.



Health and Social Care (BTEC)

What will I learn about?

Students will learn about the many changes that happen during a lifetime, such as physical growth or puberty and learning about people of all ages. They will gain an understanding about the impact of life events, such as starting school, divorce or starting a new job. They will have the opportunity to learn about both health care and social care services, jobs and the behaviours professionals should use when dealing with people.

How will I be assessed?

There are three units that students cover, two coursework units in Year 10 and one exam in Year 11

Component 1: Human lifespan development

Component 2: Service and value in health and social care

Component 3: Health and wellbeing

What skills are needed/involved?

Having an interest in learning about how people grow and develop throughout their lives is important. Having an understanding in the factors such as lifestyle choices, relationships and lifestyle events which can affect your growth and development.

A knowledge about a variety of health conditions and how to improve these as well as positive life style choices for the best possible health and well-being would also be an advantage.

Where can this subject lead me to in the future?

Students could choose to take a Level 3 qualification or Apprenticeship in Health and Social Care. Level 3 students can go on to have careers in the following areas: Nursing, Social Work, Teaching, Public Health, Therapy, Residential care work, Dietician, Speech and Language Therapy, Paramedic, Art Therapy, Occupational Therapy and many more.



History (GCSE)

What will I learn about?

There is a broad range of different historical topics covered from across several millennia. Below are the key topics which are studied.

- America, 1840–1895: Expansion and consolidation. This unit will look at the impact of European settlement and expansion of the Wild West.
- Conflict and tension: The interwar years 1918-1939. This unit will look at Europe after the First World War
- Britain: Health and the people, c1000—present day. This unit is a study of medicine in Britain from the middle ages to today
- Elizabethan England, c1568-1603. This unit will look at Queen Elizabeth's reign and incorporate a Historic Environment study

How will I be assessed?

Paper 1 written exam

50% of GCSE

2hrs

(Section A—six compulsory questions, Section B—four compulsory questions)

Paper 2 written exam

50% of GCSE

2hrs

(Section A—five compulsory questions, Section B—four compulsory questions)

What skills are needed/involved?

Students must be prepared to write longer essay style answers. Students must also be able to revise and remember a wide range of facts.

Where can this subject lead me to in the future?

History is a traditional academic subject. It is accepted as a good GCSE for a wide range of careers. Anything that involves looking at information, making decisions, arguing a point, using evidence or explaining your thoughts will make use of your history skills.



Media Studies (GCSE)

What will I learn about?

Students will develop their creative, analytical, research and communication skills exploring a range of media forms and perspectives. The four main areas of theoretical framework are 1) the language used in media, 2) how individuals and groups are represented in the media, 3) the media industry as a whole and 4) the target audiences of the media.

Students will study media products in the form of television, film, radio, newspapers, magazines, advertising, video games and music.

Key subject content from course includes:

- Close study products—the engagement in the in depth study of at least one audio-visual, one print and online media form.
- Contexts of the media—close analysis of comparisons of media products in relation to key social, cultural, historical and political contexts.

How will I be assessed?

Paper 1 written exam

35% of GCSE

1hr 30mins

Focus on media language and representations, the industry and audiences.

Paper 2 written exam

35% of GCSE

1hr 30mins

Analysis of extracts from areas of the media.

Non-exam assessment (coursework)

30% of GCSE

The creation of a media product, applying knowledge and understanding of theoretical framework.

What skills are needed/involved?

Media studies will help you develop a range of skills which are used in this subject and other areas of education such as critical thinking, analysis, research, planning, practical skills, time management and literacy skills.

Where can this subject lead me to in the future?

The natural progression is to A-Level film studies offered at QPHS sixth form. Beyond A-Levels, over 100 universities offer courses in media, communications and cultural studies in the UK



Modern Foreign Languages (French or Spanish) (GCSE)

What will I learn about?

Students will become more confident and fluent with the language through exposure of a variety of topics. These include new and more relevant topics such as the media, health, work and employment, social issues, the environment and leisure.

Within each topic, a range of grammar points and vocabulary will be taught through key skills such as translation, interpreting, reading and writing, speaking and listening. There will also be the opportunity to learn about culture and life in French and Spanish speaking countries around the world through film, music and literature.

Materials are drawn from a wide range of new and up to date sources reflecting the GCSE syllabus. The MFL department are proud to offer these materials to students at Queen's Park High School, which include a platform unique to each learner, with access to extra practice exercises, assessment and guided feedback.

How will I be assessed?

Students will complete examinations in the four skill areas at the end of the course. Listening, Speaking, Reading and Writing are weighted equally and each makes up 25% of the final grade.

What skills are needed/involved?

Students may have studied the language at KS3 and should want to learn about different cultures and customs. They must be prepared to learn vocabulary and approach their learning with a growing mind set through constant practice of vocabulary and participation in all lessons. There is heavy emphasis on group work and speaking in order to prepare for the role play elements of the final speaking exam.

Where can this subject lead me to in the future?

Language studies can be combined with all subjects. MFL graduates are the third most employable, after doctors and lawyers. Qualifications can lead to prestigious jobs in multinational companies and organisations as part of an increasingly globalised economy.

A growing amount of universities and Sixth Form colleges now ask for a language GCSE as a minimum requirement for entry.



Music (GCSE)

What will I learn about?

The course is designed to develop musicianship through the three core areas of composing, performing and appraising. Students will learn to perform as part of an ensemble and will also be supported to develop their solo performance skills, if they so wish. There will be ample opportunity for students to work on their own compositions using the recording software in the studio, two of which will be submitted for assessment. In addition to this, there is a final written examination in which students will respond to a range of short and extended listening and appraising questions based on music linked to 4 areas of study which will be covered during the 2 year course. The areas of study are as follows: Musical Forms and Devices; Music for Ensemble; Film Music and Popular Music.

How will I be assessed?

30% of the final grade will be based on a programme of performance. At least one of the pieces must be an ensemble performance and others can be either solo or ensemble pieces. Two compositions make up a further 30% of the final grade. One of these will be in response to a board set brief, and the second is a free composition. A written examination makes up the remaining 40%. The examination will consist of eight questions, two on each area of study. Of the eight questions, six will be on unprepared musical extracts and two on board set extracts.

What skills are needed/involved?

Students must have a good level of musical competency on at least one instrument or voice. They must be confident, enthusiastic and be prepared to perform. They should also have a strong desire to work on your musicianship outside of school time to develop your skill level.

Where can this subject lead me to in the future?

Natural progression includes moving to a level 3 course such as A Level or BTEC Music. Beyond that, most employers see GCSE Music as evidence of a talented individual with an added depth of character and high commitment levels. Ensemble performance develops team working and problem solving, which are good basic skills for a range of careers. This is a strong foundation for a career in the Music industry.



Physical Education (GCSE)

What will I learn about?

Within the GCSE Physical Education course, students will learn about the anatomy and physiology of the body and how it facilitates sporting performance. Students will gain an understanding of why people become involved in physical activity and the long-term health benefits of a sustained active lifestyle. Students will also learn about the relationship between exercise and diet, as well as how these factors contribute towards a balanced healthy lifestyle.

The practical aspect of the course allows students to experience a diverse curriculum that gives them the opportunity to specialise in three chosen sports.

How will I be assessed?

This course is divided into both theoretical and practical assessments. The theoretical aspect of the GCSE is worth a total of 60% of the course. This is comprised of two externally marked exams; component 1 exam (36%) relates to fitness and body systems, whereas the component 2 exam (24%) relates to health and performance. Both of these exams include multiple choice, short answer and long answer questions.

The practical element of the course accounts for 30% of the final grade. This is made up of practical grades from three sports which are selected from a predetermined list; each sport is worth 10%. The final 10% of the course is assessment via coursework. This involves students designing and evaluating the effectiveness of a personal exercise programme.

What skills are needed/involved?

Students require an enthusiasm for sport and a desire to understand how physical activity enhances lifestyles. A good standard of physical performance is essential, as this makes up 30% of the total GCSE. Students also need good organisational skills and the ability to work autonomously and as part of a team.

Where can this subject lead me to in the future?

A GCSE in physical education has a clear pathway into the BTEC Level 3 offered in the QPHS Sixth Form. Students can then undertake higher education courses such as degrees in sports science, sports pedagogy, sports psychology or physiotherapy.



Photography (GCSE)

What will I learn about?

Students must select and present a portfolio representative of their course of study. The portfolio must include both:

- A sustained project developed in response to 'Identity' and the 'Environment' evidencing the journey from initial engagement with ideas to the realisation of intentions. Students will explore different artists and photographers to develop their understanding across the course of study. Skills developed in the use of DSLR cameras, mobile phone cameras and Photoshop editing software will be used to create their work.
- A selection of further work resulting from activities such as trials, experiments and skills-based workshops will be used to support the portfolio submission.

How will I be assessed?

The photography course combines an element of coursework and practical examination components. In this way, students are assessed on both their practical skills and their written knowledge and understanding.

Component 1: Portfolio

60% of GCSE

Component 2: Externally set assignment

40% of GCSE

What skills are needed/involved?

A broad depth of knowledge and understanding from all of your current subjects is an excellent starting point. Having a creative imagination and the enjoyment of wanting to make and create is fundamental.

Where can this subject lead me to in the future?

A Level Photography with the next steps in education being degree courses and careers in Photography including Fashion, Journalism, Film, Documentary, Advertising, Media and Marketing.



Religious Studies (GCSE)

What will I learn about?

Any four of the following religious, philosophical and ethical themes:

Theme A: Relationships and families

Theme B: Religion and life

Theme C: The existence of God and revelation

Theme D: Religion, peace and conflict

Theme E: Religion, crime and punishment

Theme F: Religion, human rights and social justice

In addition to the themes above, students will study the beliefs and practices of two religions: Christianity and Sikhism

How will I be assessed?

Two written exams

Each exam is 1hr 45mins

Common structure of four 5-part questions of 1, 2, 4, 5 and 12 marks.

What skills are needed/involved?

The maturity to express your views on complex and emotive moral issues without trying to impose them on others. The ability to evaluate, both verbally and in extended pieces of writing. A curiosity to tackle some of the big questions e.g. "When does life begin?", "Can killing ever be justified?", "Is there Life after Death?" .

Where can this subject lead me to in the future?

Religious Studies graduates go on to work in a wide range of fields, including Financial Services, Medicine, Politics, Consultancy, Journalism, Media, Social & Pastoral Care, Education, Publishing, Law, Community & Voluntary work, and many others.



Technology: 3D Design (GCSE)

What will I learn about?

Students must select and present a portfolio representative of their course of study. The portfolio must include both:

1. A sustained project developed throughout the course where students will develop the ability to design and make products with creativity and originality, using a range of materials and techniques.
2. A selection of further work resulting from activities such as trials, experiments and skills-based workshops.

The course will allow students to develop their knowledge of a range of materials and the use of new technologies. Students will learn how to design, make, evaluate and advertise products over the two year course. Students will explore different artists and designers to develop their knowledge and understanding across their course of study.

How will I be assessed?

The 3D Design course combines an element of coursework and practical examination components. In this way, students are assessed on both their practical skills and their written knowledge and understanding.

Component 1: Portfolio

60% of GCSE

Component 2: Externally set assignment

40% of GCSE

What skills are needed/involved?

Students should have a passion for design, creative imagination and enjoy using practical skills. Good hands-on skills are important.

Where can this subject lead me to in the future?

The next natural progression would be A Level design at sixth form with engineering courses at university beyond sixth form.



Technology: Design and Technology (GCSE)

What will I learn about?

Students will learn about each aspect of the design process in depth, including research on existing products and designers, understanding target markets, identifying and solving problems, writing a design brief and specification, drawing and generating design ideas, Computer Aided Design, modelling and prototyping, practical skills and evaluation.

They will also complete some smaller practical skills based projects in the first year alongside theory covering the 5 areas of focus:

- Design and technology in our world
- Smart materials
- Electronic systems and programmable components
- Mechanical components and devices
- Materials

How will I be assessed?

The course is 50% written exam and 50% coursework;

Component 1: Written examination: assessing knowledge and understanding of technical principles, designing and making principles along with their ability to analyse and evaluate design decisions and wider issues in design and technology.

Component 2: Design and make coursework task based on a contextual challenge set by the exam board, assessing your ability to identify, investigate and outline design possibilities, design and make prototypes

What skills are needed/involved?

Students should have creative imagination combined with an enthusiasm for understanding how products and materials work. Drawing and practical skills are essential, as well as a good understanding of technical principles and high quality presentation skills. A solid understanding in maths and physics is required to

Where can this subject lead me to in the future?

The next natural progression would be A Level Design Technology or Engineering, leading to Product Design, Engineering or Architectural courses at University or apprenticeships in similar industries.



Triple Science: Biology, Chemistry and Physics (3 GCSEs)

What will I learn about?

The curriculum content is based on key concepts and principles across all three sciences, developing practical science skills and learning to interpret experimental data and applying knowledge to new contexts. A topic overview for each subject is below:

Biology

Cell biology; organisation, infection and response; bioenergetics; homeostasis and response; inheritance variation and evolution and ecology.

Chemistry

Atomic structure & the periodic table; bonding; structure & properties of matter; quantitative chemistry; chemical changes; energy changes; the rate and extent of chemical change; organic chemistry; chemical analysis; chemistry of the atmosphere and using resources.

Physics

Forces, energy, waves, electricity and magnetism, particle model of matter, atomic structure. Triple science is the only subject which you can study Space Physics; this option is not available in combined science.

How will I be assessed?

Six written exams (two exams for each GCSE)

1hr 45mins each

Each exam counts for 50% of each GCSE

During the course, students will also be assessed on practical skill development .

What skills are needed/involved?

Students will need a deep understanding in both science and maths with a good learning record. This would be reflected in assessments being regularly on or above track. A positive attitude to learning will help you to succeed in this subject.

Where can this subject lead me to in the future?

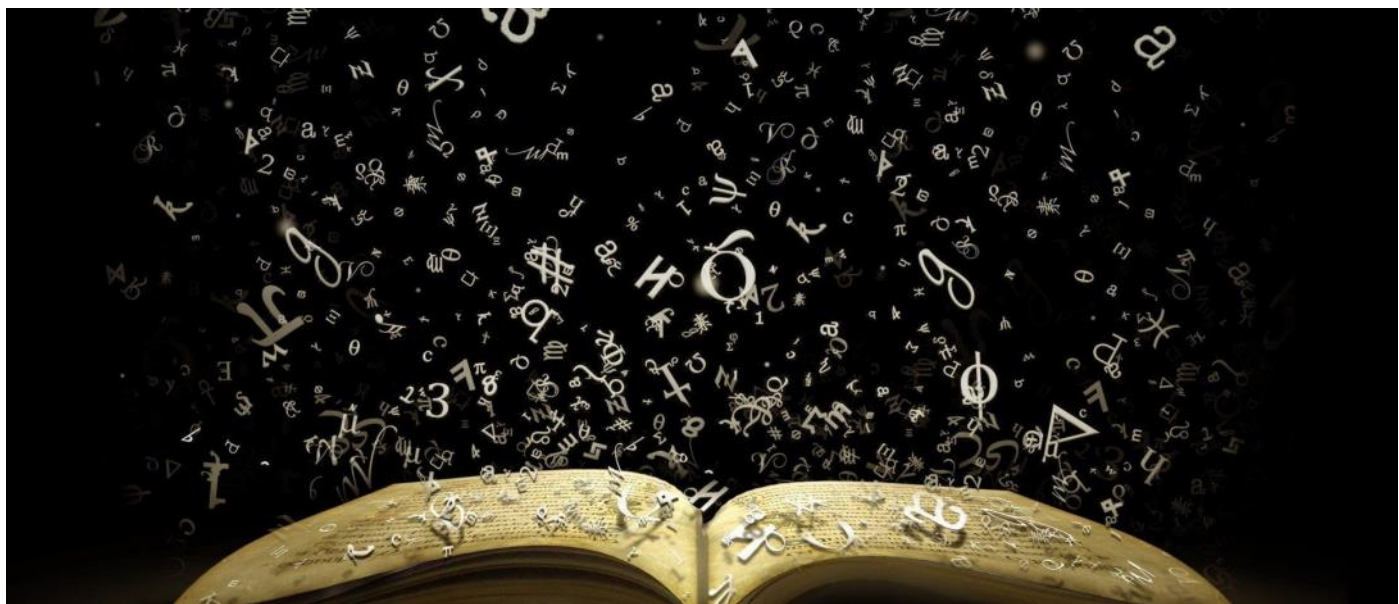
Triple science is great starting point for studying the A Levels science and degrees based in STEM. Biology provides a great foundation for careers such as working in medicine, veterinary work and biological sciences. Chemistry is great preparation for careers in medicine, veterinary, pharmacy, and chemical engineering, as well as jobs which require the ability to handle data such as accountancy and finance. Physics will help in careers such as engineering, aeronautics, architecture, and sports science.



Core (Compulsory) Subjects Course Information

Subjects

- English Language and Literature P 23
- Mathematics P 24
- Combined Science P 25
- Core PE P 26
- WPD P 27



English Language (GCSE) and English Literature (GCSE)

What will I learn about?

For English language students will study literary fiction, descriptive and narrative writing, non-fiction texts, literary non-fiction texts, writing for a range of audiences and purposes.

For English literature students will study Shakespeare, a 19th century novel, modern texts and poetry,

How will I be assessed?

There are four examinations across the two GCSEs:

English Language

Two written exams

1hr 45mins each

Paper 1—Creative reading and writing

Paper 2—Writers' viewpoints and perspectives

English Literature

Two written exams

Paper 1—Shakespeare and the 19th century novel (1hr 45 mins)

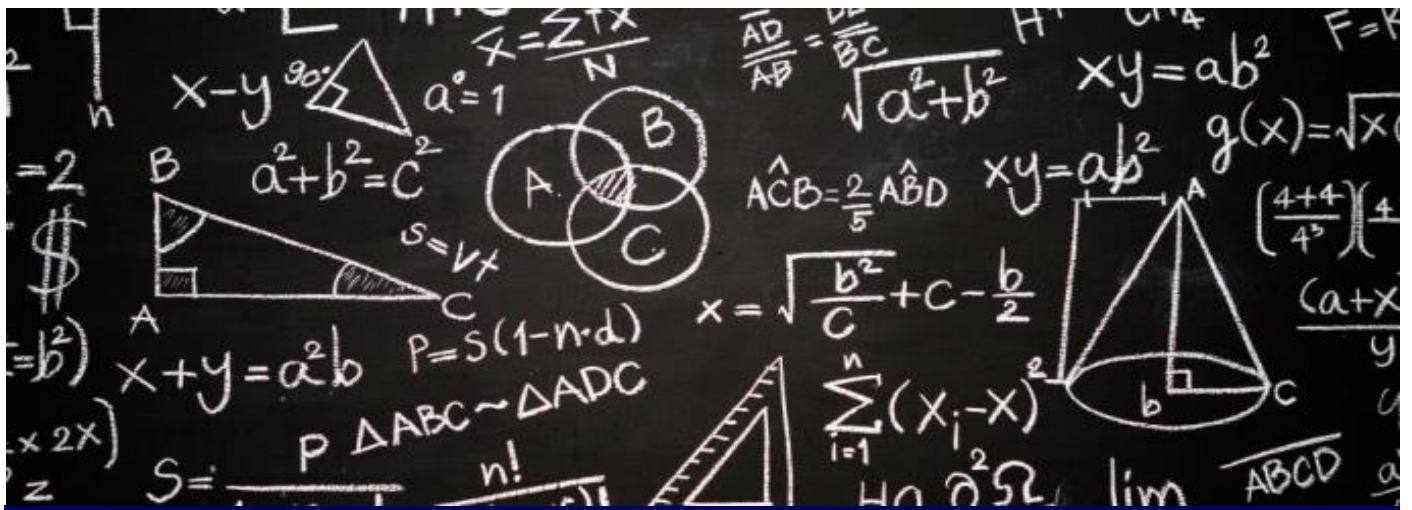
Paper 2—Modern texts and poetry (2hr 15 mins)

What skills are needed/involved?

All students will take this subject. To be successful students need to have a desire to read and understand a wide range of reading materials. Students will also have a passion for improving your writing skills when writing for a wide range of audiences and purposes. Students will be required to take part in some speaking and listening tasks as well.

Where can this subject lead me to in the future?

Students can go on to study English Language and Literature at A Level. This course will also equip students for a vast range of other subjects such as media, film, psychology and law. Students will need to pass this course to access many higher education and career opportunities.



Mathematics (GCSE)

What will I learn about?

The specification is split into:

- 1) Number
- 2) Algebra
- 3) Ratio, Proportion and Rates of change
- 4) Geometry and Measures
- 5) Probability
- 6) Statistics

These are all topics that the students will have studied in KS3 but the GCSE course will expect students to be much more fluent in their application of numbers.

How will I be assessed?

The qualification consists of three equally-weighted written examination papers at either Foundation tier or Higher tier. Each paper is 1 hour and 30 minutes long and has 80 marks available. The content outlined for each tier will be assessed across all three papers.

What skills are needed/involved?

All students are required to study GCSE Mathematics.

Where can this subject lead me to in the future?

Success in GCSE Mathematics can lead to studying mathematics and science subjects at A Level and then on to university.



Combined Science (2 GCSEs)

What will I learn about?

Students will learn traditional Biology, Chemistry and Physics topics.

The biology topics are cell biology, organisation, infection and response, bioenergetics, inheritance and ecology.

The chemistry topics are atomic structure, structure and bonding, quantitative chemistry, chemical changes, energy changes, rate of reactions, organic chemistry, chemical analysis, atmosphere and resources.

The physics topics are energy, electricity, particles, radiation, forces, waves and magnetism.

***Those students who do not choose triple science will follow the combined science course.**

How will I be assessed?

Six written exams (two biology, two chemistry and two physics)

1hr 15mins each

Each exam counts for 16.7% of the GCSE

During the course, students will also be assessed on practical skill development.

Students will receive an average grade across their biology, chemistry and physics assessments and receive two GCSEs at this grade.

What skills are needed/involved?

All students are required to study GCSE combined science if they do not choose triple science as an option. However, all students must demonstrate a positive and hardworking attitude towards this challenging subject.

Where can this subject lead me to in the future?

Studying Combined Science provides an all-round balance of the subject which prepares pupils to complete further study in the sciences if desired.



Core Physical Education

What will I learn about?

This is a compulsory, non-assessed course of study. All students are automatically enrolled as per the national curriculum guidelines. This is with a view of encouraging healthy active lifestyle for all. Students are provided with the opportunity to become involved in a range of activities that develop personal fitness and promote an active, healthy lifestyle. Students will be provided with specialist and individual feedback to help them develop their technique, tactics and strategies as well as being taught the skills to successfully evaluate their own and others performances. The ultimate goal remains enthusing students with a love and enjoyment for sport and facilitating an appreciation of a healthy, active lifestyle. In addition, offering support to high achievers in pursuit of sporting excellence whether this be through community links, sports clubs or regular competitive sports.

How will I be assessed?

This is a non-assessed course, as there is no qualification to gain. That said, students will acquire sporting specific knowledge. The strength of their knowledge will be assessed through directed questioning with formative feedback given throughout the course. There will also be opportunities for student to engage in performance analysis using ICT video. This will enable students to improve their performance via peer assessment.

What skills are needed/involved?

There is an expectation that you bring your P.E. kit to lessons and try your best at all times. An enthusiasm and determination to engage positively in all sports that are covered.

Where can this subject lead me to in the future?

This subject will help to keep you fit and healthy, enabling you to achieve in all aspects of school.



WPD (World Views & Personal Development)

What will I learn about?

This is a compulsory element of education in all schools and ensures students meet the requirements of the Cheshire agreed RE syllabus and the statutory strands of relationships, sex, health education which is part of our whole school PSHCE education programme.

The course is structured via the completion of three core themes during KS4:

Crime and punishment—criminal justice systems; capital punishment; rule of law linked to risk taking behaviour; drugs; knife crime; acid attacks; hate crime; honour based violence; female genital mutilation; gangs and county lines and anti-social behaviour.

RSHE—relationships; pornography; sexting; grooming; consent; sexual abuse; contraception; STIs; Equality Act 2010 and British values.

Matters of life and death—is there life after death?; euthanasia; managing grief; loss and bereavement; menstrual and gynaecological health; pregnancy; blood; organ and stem cell donation; abortion; miscarriage; adoption; families and parenting; safe and healthy lifestyle choices; health care system and services.

How will I be assessed?

Via written work and discussion-based activities. Extended pieces of writing and exam style questions will be awarded an exam style grade.

What skills are needed/involved?

The KS4 course builds upon and extends KS3 knowledge of RE and PSHCE. You need to have an enquiring mind and the willingness to think about a wide range of topics and understand different points of view.

Where can this subject lead me to in the future?

WPD knowledge and skills are used in a wide range of fields, including Financial Services, Medicine, Politics, Consultancy, Journalism, Media, Social & Pastoral Care, Education, Publishing, Law, Community & Voluntary work, and many others.



Inspiring Individuals • Empowering Minds • Defining Futures
QUEEN'S PARK HIGH SCHOOL, QUEENS PARK ROAD, CHESTER CH4 7AE
T: 01244 257088 | E: enquiries@qphs.co.uk | W: www.qphs.co.uk
@qphschester | @qphschester | QPHS Chester
Headteacher: Mr Tom Kearns

